



# SO MANY REASONS TO DRINK FALL BEER



## BELL'S OCTOBERFEST

With herbal hop aromas, this balanced amber lager focuses on lightly toasted malt that lends body without too much sweetness.

## Best Brown

has hints of caramel and cocoa, the malt body has the depth to stand up to cool weather, but does not come across as heavy.



## Bell's Double Cream Stout

Named for its velvety smooth, creamy texture, this incredibly rich **stout** is brewed with 10 different specialty roasted malts chosen that impart notes of rich mocha and espresso

## Samuel Adams® Octoberfest

has a rich, deep golden amber hue which itself is reflective of the season. A malt lover's dream, masterfully blending together four roasts of barley to create a delicious harmony of sweet flavors including caramel and toffee.

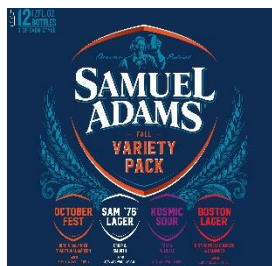


## BOULEVARD Steep Drop!

a nitro-charged coffee milk stout that hits 5.5% ABV

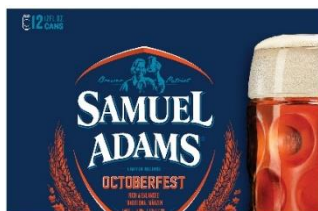
## Samuel Adams

**Kosmic** is an American Wild Ale ... Not very frothy. light for a dark colored beer.



## Sam Adams Fall Variety Pack

A collection of beers to perfectly compliment the cooler nights and changing leaves. Includes: Octoberfest, Sam 76 Lager, Kosmic Sour & Boston Lager



## CHILL VIBES

## SOUR ALE WITH CUCUMBER

Aromas of freshly picked cucumbers and a subtle, grassy sweetness cool everything down in this slightly tart, pale golden ale. Lively carbonation leads to a crisp, dry finish that inspires primo relaxation.



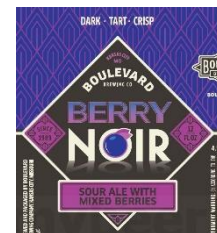
## DuClaw Purple

**Passion** Brewed with Passionfruit, Blackberry and Sea Salt, this purple-hued Gose may cause your taste buds to partake in excessive celebration!



## Harvest Pumpkin Ale

An amber-colored pumpkin ale brewed with fall flavors including pumpkin, allspice, cloves and nutmeg

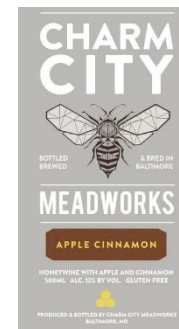


**Berry Noir** a sour ale with mixed berries. This "dark, tart and crisp" sour hits 4.5%-Abv



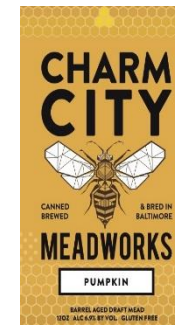
## DuClaw 31 Lager

This amber colored, medium-bodied German-style lager Tricks you with its smooth, malty flavor profile and moderate 5.7% ABV, then treats your senses with a spicy, crisp finish of Cinnamon, nutmeg and pumpkin. It with a crisp finish.



## Apple

**Cinnamon** An off-dry mead with apple and cinnamon for the colder months. Just like apple pie



## Pumpkin

**Harvest** spice with a subtle finish of true pumpkin, this effervescent autumnal beverage is sure to keep things light.



## Du Claw Mad Bishop

one of our most popular and enduring seasonal brews, has been haunting the congregation with its distinct copper color, and rich toasted malt flavor and aroma. A true 6% ABV German-style Oktoberfest combines complex aromas and flavors of sweet and toasted malt with a crisp finish





**Flying Dog Dogtoberfest**  
It is rich and malty with a sweet aroma and deep mahogany color.



**Flying Dog The Fear**  
An Imperial Pumpkin Ale

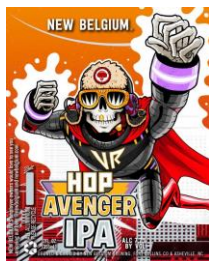


**Monument City Waterways** is a American Imperial IPA style beer that helps fight pollution



**Jailbreak Oktoberfest**

Their take on this classic, brewed in the traditional style with a lengthy laagering process and all German malts and yeast.



**Hop Avenger IPA** – With its super juicy tropical aroma, Hop Avenger IPA's blend of Chinook and Jester hops packs a powerful pineapple punch.

# SO MANY REASONS TO DRINK FALL BEER



**Shiner Oktoberfest** brew is made with the highest quality two-row barley, Munich and caramel malts, along with German grown Hallertau Tradition and Hersbrucker hops



**New Belgium Peach Kick**, a slightly sour peach ale, is our ode to harvest time in Colorado.



**Harpoon Octoberfest** is a malty tribute to fall, balanced by a gentle hop bitterness. In keeping with tradition, it is a Marzen-style beer, brewed with abundant quantities of Munich, Chocolate, and Pale malts.



**Voo Doo Ranger Atomic Pumpkin** A pumpkin ale featuring cinnamon and haba ero chili peppers for just the right amount of heat.



**Harpoon UFO Pumpkin** fall-spiced Hefeweizen with pure pumpkin– and truly delicious!



**Spaten Oktoberfest** Amber in color. This medium bodied beer has achieved its impeccable taste by balancing the roasted malt flavor with the perfect amount of hops



**Jazz Cabbage** hemp infused IPA is our dankest beer to date. Packing in our very own special strain of hemp flavors, this IPA will fill the room with aromas of the choicest sticky nugs. We brewed this beer by blending three high-quality hops to help complement the kind profile of this heady IPA.



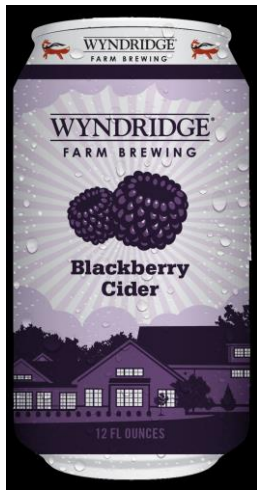
**Lord Maltimore Oktoberfest** A fair balance between the malty nature of Marzens and a small hop presence creating a clean, balanced Fest beer



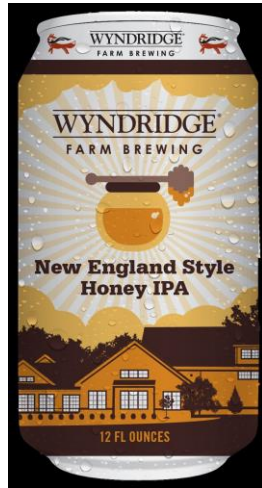
**Hoppin' Bubbly** Brut IPA celebrates the classic malt bill from “The Champagne of Beers” and Terrapin’s affinity for IPAs. Innovative brewing and dry hopping techniques help create a beer that has a crisp, bone-dry finish and an aromatic hop profile.



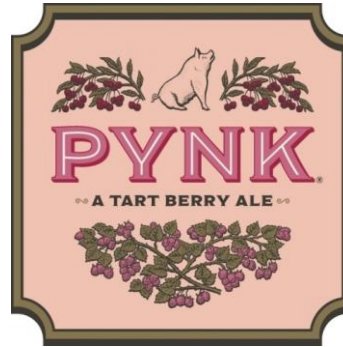
# SO MANY REASONS TO DRINK FALL BEER



**Blackberry Cider.** A perfect union of bramble fruit and local apples, this cider is a wonderful hued fruit cider with dark fruit undertones and bright apple acidity.



**New England IPA** was brewed with local honey, adding to the beer's complexity. The honey accentuates the notes of ripe berries, citrus, and pine created by the hops. ABV 7.1% 65 IBU



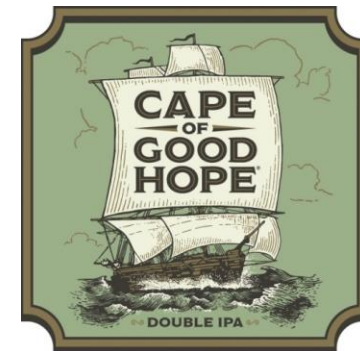
Each sip of **PYNK** starts with a crisp, fruity zing and finishes refreshingly dry. The delightful pink hue comes from heaps of fresh raspberries and cherries in every batch. Yards proudly donates \$1 from every case sold to breast cancer research and awareness



This is **Loyal Lager** and the beer will hit a seasonable 5%-Abv.



**Yuengling Oktoberfest** is Brewed with a blend of Tettnang and Hallertau hops, it's a traditional copper lager, toasty with pretzel and brown bread overtones, lots of chewy malt, and the slightest hint of lemon peel. The finish sees a spiced apple note emerging, giving it an almost wintry overtone that works well with the darker lager notes that come before. All told it's a fun and complex — yet easy-drinking — seasonal.



**Cape of Good Hope** always promises to take you on an epic journey. This highly drinkable West Coast Double IPA is bursting with notes of citrus, melon, and pine from Chinook, Azacca, Simcoe, Citra, Hallertau Blanc, and Cascade hops. West coast style IPA